



Peartree Hill Solar Farm

Environmental Statement

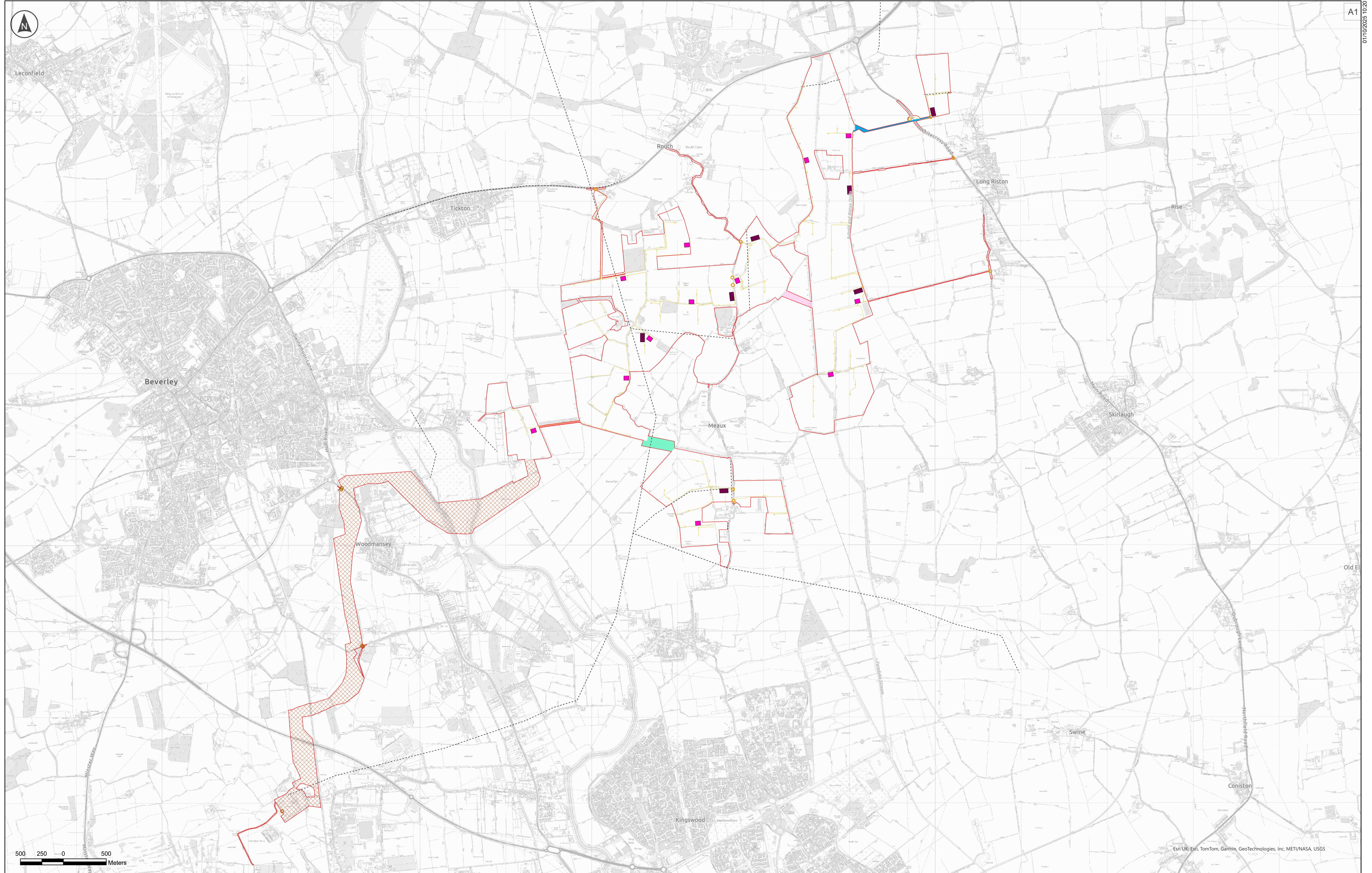
Volume 3

Figure 3.5: Indicative Construction Layout Plan

Revision 3

Application Document Ref: EN010157/APP/6.3
October 2025

Planning Act 2008
Infrastructure Planning
(Applications: Prescribed Forms
and Procedure) Regulations 2009 –
Regulation 5(2)(a)



Esri UK, Esri, TomTom, Garmin, GeoTechnologies, Inc, METI/NASA, USGS

500 250 0 500 Meters

Key

Order Limits	Cable Route Corridor	Cable E-F
Powerlines and Pylons	Interconnecting Cabling Corridors between Land Areas:	Access Points
Internal Access Tracks	Cable C-D	Cable Route Access Points
Main Compound	Cable B-B	
Satellite Compound	Cable E-E	

The Base mapping is based upon Ordnance Survey (OS) data. Reproduced by permission of Ordnance Survey on behalf of HMSO. © Crown copyright and database rights 2025. Ordnance Survey AC0000808122

Notes:
 1. This drawing is for illustrative purposes only

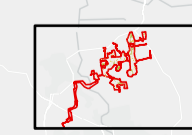
Rev	Date	By	Chkd	Appd	Authd
P04	30/09/2025	NAM	EH	AD	MG



Client
 Project Name
Peartree Hill Solar Farm

Drawing Title
Environmental Statement Volume 3, Figure 3.5: Indicative Construction Layout Plan

Scale at A1 1:20,000	Coordinate System British National Grid
Status DCO Application	
Infrastructure Planning (Applications: Prescribed Forms and Procedure) Regulations 2009: 5(2)(a)	
PINS Number EN010157/APP/6/3	Rev P04



Esri UK, Esri, TomTom, Garmin, FAO, METI/NASA, USGS